

GENERAL NOTES

1. This drawing and associated calculations is the property of WoodCon.Ltd.. Any copying, distribution and usage of these drawings without the permission from WoodCon.Ltd, is not allowed.
2. Loads:
 - Dead load roof: 550 N/m²
 - Dead load ceiling: 300 N/m²
 - Snow load: 2000 N/m²
 - Wind load, (velocity pressure): 730 N/m²
3. A detailed design of suspension between construction parts is not made by WoodCon.Ltd. This is assumed to be made by the client/building designer.
4. It needs to be verified that the roof layout, trusses and supporting system is in compliance with the wishes/demands of the client before the production of the trusses starts.
5. Wind and stability bracing of the building:
 - Out of plane bracing of trusses and stability bracing of the building need to be calculated separately on a building of this size. This is not made by WoodCon.Ltd, but is assumed to be done by the building designer.



WoodCon, Ltd
 REG.LV41203036961
 Ph:+37129332958
 e-mail: woodcon@woodcon.lv

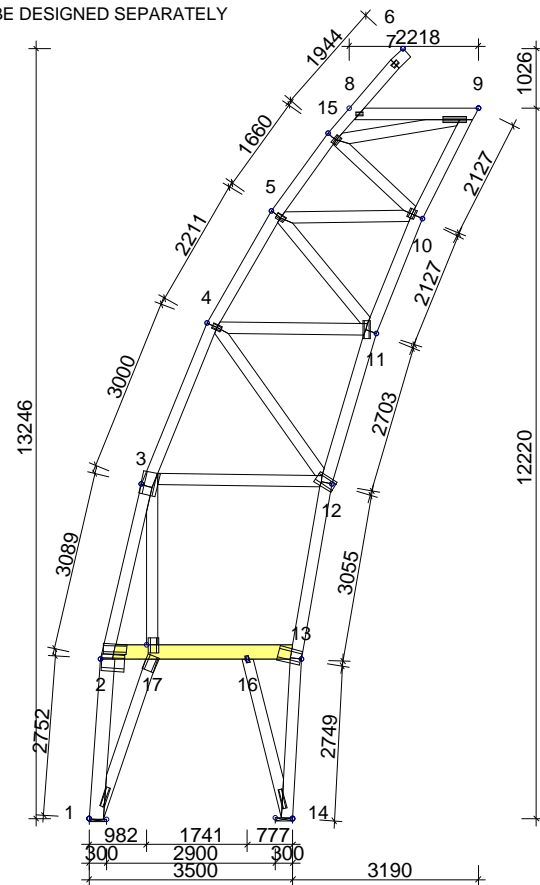
DRAWN	CHECKED	JOB NO. Complex_18
		20120409

CODE TYPE NO.	DRAWING NUMBER	REG.
---------------	----------------	------

SCALE 1:225

BRACINGS ACCORDING TO TIMBER TABLE AND STABILITY OF THE TRUSS SYSTEM SHALL BE DESIGNED SEPARATELY

☒ INDICATES BRACING



TIMBER: THICKNESS 45 mm 7 PLY				
CONSTR.-PART	DEPTH mm	GRADE	BRACING mm	LOAD N/m²
1-2	245	K24	None	150
2-3	195	K24	400	550
3-4	195	K24	400	550
4-5	195	K24	400	550
6-7	195	K24	400	550
7-15	195	K24	400	550
8-9	195	K24	< 2129	550
9-10	195	K24	Full	300
10-11	195	K24	Full	300
11-12	195	K24	Full	300
12-13	195	K24	400	550
13-14	195	K24	None	150
5-15	195	K24	400	550
2-13	245	K24	Full	1500
3-12	195	K24	None	
1-17	195	K24	None	
3-17	195	K24	None	
14-16	195	K24	None	
4-12	195	K24	None	
4-11	195	K24	None	
5-11	195	K24	None	
5-10	195	K24	None	
10-15	195	K24	None	
9-15	195	K24	None	
SC 2-13	1x45x245	K24	None	

GENERAL SETTINGS:	
TIMBER THICKNESS: (mm)	7 x 45
TRUSS CENTRES: (mm)	1200
CLIMATE CLASS:	2
SAFETY CLASS:	2
LOADS (N/m²):	
SNOW LOAD (BASE VALUE):	1200
WIND LOAD (BASE VALUE):	730
DEAD LOADS: SEE TIMBER TABLE	
OTHER LOADS AS PER CALC. PRINT-OUT	

GENERAL DIRECTIONS:

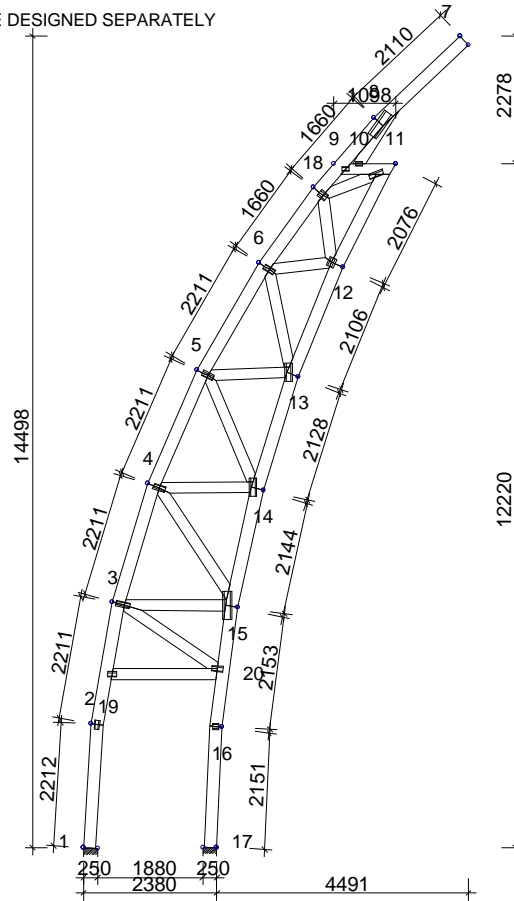
THE STRUCTURE HAS BEEN CALCULATED USING COMPUTER PROGRAM "TRUSSCON". LIC.NO: 15323
 CODE TIMBER: BKR03 (BFS2005:18)
 CODE FASTENER: GODKÄNNANDE-REGLER No 4 1974.

VERSION: 2011 SR3c
 TIME: 14.49

		WoodCon, Ltd REG.LV41203036961 Ph:+37129332958 e-mail: woodcon@woodcon.lv	
		DRAWN CONSTR.BY ,20120409	CHECKED Complex_18
CODE TYPE NO.		DRAWING NUMBER	REG.
		T1	

BRACINGS ACCORDING TO TIMBER TABLE AND STABILITY OF THE TRUSS SYSTEM SHALL BE DESIGNED SEPARATELY

☒ INDICATES BRACING



TIMBER: THICKNESS 95 mm 4 PLY				
CONSTR.-PART	DEPTH mm	GRADE	BRACING mm	LOAD N/m²
1-2	220	K24	None	150
3-4	220	K24	400	550
4-5	220	K24	400	550
5-6	220	K24	400	550
6-7	220	K24	400	550
7-8	220	K24	400	550
8-18	220	K24	400	550
9-18	195	K24	400	550
10-18	195	K24	400	550
11-18	195	K24	400	550
12-18	220	K24	Full	300
13-18	220	K24	Full	300
14-18	220	K24	Full	300
15-18	220	K24	Full	300
16-18	220	K24	None	150
19-20	195	K24	Full	300
6-18	220	K24	400	550
15-18	220	K24	400	550
2-3	220	K24	400	650
3-15	195	K24	None	150
3-2	195	K24	None	150
4-2	195	K24	None	150
1-15	195	K24	None	150
1-14	195	K24	None	150
1-13	195	K24	None	150
1-12	195	K24	None	150
1-11	195	K24	None	150
1-10	195	K24	None	150
1-9	195	K24	None	150
1-8	195	K24	None	150
1-7	195	K24	None	150
1-6	195	K24	None	150
1-5	195	K24	None	150
1-4	195	K24	None	150
1-3	195	K24	None	150
1-2	195	K24	None	150
8-10	195	K24	None	150

GENERAL SETTINGS:	
TIMBER THICKNESS: (mm)	4 x 95
TRUSS CENTRES: (mm)	1200
CLIMATE CLASS:	2
SAFETY CLASS:	2
LOADS (N/m²):	
SNOW LOAD (BASE VALUE):	1200
WIND LOAD (BASE VALUE):	730
DEAD LOADS: SEE TIMBER TABLE	
OTHER LOADS AS PER CALC. PRINT-OUT	

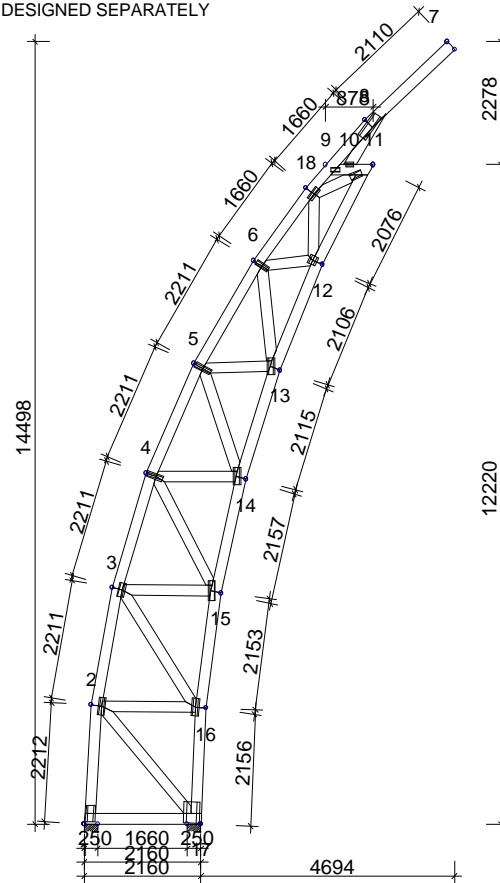
GENERAL DIRECTIONS:
 THE STRUCTURE HAS BEEN CALCULATED USING COMPUTER PROGRAM "TRUSSCON". LIC.NO: 15323
 CODE TIMBER: BKR03 (BFS2005:18)
 CODE FASTENER: GODKÄNNANDE-REGLER No 4 1974.

VERSION: 2011 SR3c
 TIME: 14.58

		WoodCon, Ltd REG.LV41203036961 Ph:+37129332958 e-mail: woodcon@woodcon.lv		SCALE 1:135
		DRAWN CONSTR.BY	CHECKED	
,20120409		CODE TYPE NO.	DRAWING NUMBER T3	REG.

BRACINGS ACCORDING TO TIMBER TABLE AND STABILITY OF THE TRUSS SYSTEM SHALL BE DESIGNED SEPARATELY

☒ INDICATES BRACING



SEE CALC.PRINTOUT FOR INFORMATION NOT FOUND IN TABLES

TIMBER: THICKNESS 95 mm 2 PLY				
CONSTR.-PART	DEPTH mm	GRADE	BRACING mm	LOAD N/m²
1-2	195	K24	None	150
2-3	195	K24	400	550
3-4	195	K24	400	550
4-5	195	K24	400	550
5-6	195	K24	400	550
7-8	195	K24	400	650
8-18	195	K24	400	550
9-11	195	K24	< 789	550
11-12	195	K24	Full	300
12-13	195	K24	Full	300
13-14	195	K24	Full	300
14-15	195	K24	Full	300
15-16	195	K24	400	550
16-17	195	K24	None	150
17-18	195	K24	Full	300
19-20	195	K24	400	550
21-22	195	K24	None	
23-24	195	K24	None	
25-26	195	K24	None	
27-28	195	K24	None	
29-30	195	K24	None	
31-32	195	K24	None	
33-34	195	K24	None	
35-36	195	K24	None	
37-38	195	K24	None	
39-40	195	K24	None	
41-42	195	K24	None	
43-44	195	K24	None	
45-46	195	K24	None	
47-48	195	K24	None	
49-50	195	K24	None	
51-52	195	K24	None	
53-54	195	K24	None	
55-56	195	K24	None	
57-58	195	K24	None	
59-60	195	K24	None	
61-62	195	K24	None	
63-64	195	K24	None	
65-66	195	K24	None	
67-68	195	K24	None	
69-70	195	K24	None	
71-72	195	K24	None	
73-74	195	K24	None	
75-76	195	K24	None	
77-78	195	K24	None	
79-80	195	K24	None	
81-82	195	K24	None	
83-84	195	K24	None	
85-86	195	K24	None	
87-88	195	K24	None	
89-90	195	K24	None	
91-92	195	K24	None	
93-94	195	K24	None	
95-96	195	K24	None	
97-98	195	K24	None	
99-100	195	K24	None	

GENERAL SETTINGS:	
TIMBER THICKNESS: (mm)	2 x 95
TRUSS CENTRES: (mm)	1200
CLIMATE CLASS:	2
SAFETY CLASS:	2
LOADS (N/m²):	
SNOW LOAD (BASE VALUE):	1200
WIND LOAD (BASE VALUE):	730
LIVE LOAD:	NO FIXED RF FREE RF
	1 500 0.50
DEAD LOADS: SEE TIMBER TABLE	
OTHER LOADS AS PER CALC. PRINT-OUT	

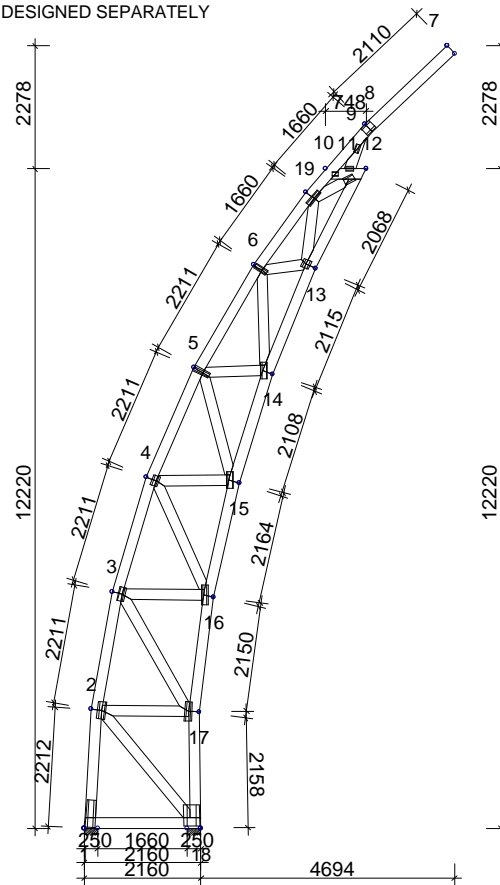
GENERAL DIRECTIONS:
 THE STRUCTURE HAS BEEN CALCULATED USING COMPUTER PROGRAM "TRUSSCON". LIC.NO: 15323
 CODE TIMBER: BKR03 (BFS2005:18)
 CODE FASTENER: GODKÄNNANDE-REGLER No 4 1974.

VERSION: 2011 SR3c
 TIME: 15.01

		WoodCon, Ltd REG.LV41203036961 Ph:+37129332958 e-mail: woodcon@woodcon.lv	
		DRAWN CONSTR.BY ,20120409	CHECKED Complex_18
CODE TYPE NO.		DRAWING NUMBER T4	REG.

BRACINGS ACCORDING TO TIMBER TABLE AND STABILITY OF THE TRUSS SYSTEM SHALL BE DESIGNED SEPARATELY

INDICATES BRACING



SEE CALC.PRINTOUT FOR INFORMATION NOT FOUND IN TABLES

TIMBER: THICKNESS 95 mm 2 PLY				
CONSTR.-PART	DEPTH mm	GRADE	BRACING mm	LOAD N/m²
1-2	195	K24	None	150
2-3	195	K24	400	550
3-4	195	K24	400	550
4-5	195	K24	400	550
5-6	195	K24	400	550
7-8	195	K24	400	650
8-19	195	K24	400	550
10-12	195	K24	< 659	550
12-13	195	K24	Full	300
13-14	195	K24	Full	300
14-15	195	K24	Full	300
15-16	195	K24	Full	300
16-17	195	K24	400	550
17-18	195	K24	None	150
18-19	195	K24	Full	300
20-19	195	K24	400	550
21-19	195	K24	None	
22-19	195	K24	None	
23-19	195	K24	None	
24-19	195	K24	None	
25-19	195	K24	None	
26-19	195	K24	None	
27-19	195	K24	None	
28-19	195	K24	None	
29-19	195	K24	None	
30-19	195	K24	None	
31-19	195	K24	None	
32-19	195	K24	None	
33-19	195	K24	None	
34-19	195	K24	None	
35-19	195	K24	None	
36-19	195	K24	None	
37-19	195	K24	None	
38-19	195	K24	None	
39-19	195	K24	None	
40-19	195	K24	None	

GENERAL SETTINGS:	
TIMBER THICKNESS: (mm)	2 x 95
TRUSS CENTRES: (mm)	1200
CLIMATE CLASS:	2
SAFETY CLASS:	2
LOADS (N/m²):	
SNOW LOAD (BASE VALUE):	1200
WIND LOAD (BASE VALUE):	730
LIVE LOAD:	NO FIXED RF FREE RF
	1 500 0.50
DEAD LOADS: SEE TIMBER TABLE	
OTHER LOADS AS PER CALC. PRINT-OUT	

GENERAL DIRECTIONS:

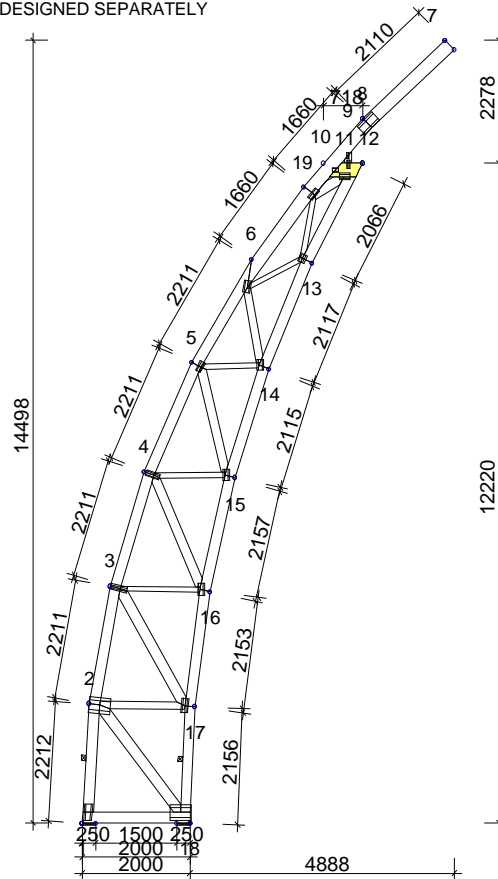
THE STRUCTURE HAS BEEN CALCULATED USING COMPUTER PROGRAM "TRUSSCON". LIC.NO: 15323
 CODE TIMBER: BKR03 (BFS2005:18)
 CODE FASTENER: GODKÄNNANDE-REGLER No 4 1974.

VERSION: 2011 SR3c
 TIME: 15.04

		WoodCon, Ltd REG.LV41203036961 Ph:+37129332958 e-mail: woodcon@woodcon.lv	
		DRAWN CONSTR.BY ,20120409	CHECKED Complex_18
CODE TYPE NO.		DRAWING NUMBER T5	REG.

BRACINGS ACCORDING TO TIMBER TABLE AND STABILITY OF THE TRUSS SYSTEM SHALL BE DESIGNED SEPARATELY

☒ INDICATES BRACING



SEE CALC.PRINTOUT FOR INFORMATION NOT FOUND IN TABLES

TIMBER:				
THICKNESS 45 mm 3 PLY				
CONSTR.-PART	DEPTH mm	GRADE	BRACING mm/pcs	LOAD N/m²
1-2	195	K30	1 pcs	150
2-3	195	K24	400	550
3-4	195	K24	400	550
4-5	195	K24	400	550
5-6	195	K18	400	550
7-8	245	K24	400	650
8-19	245	K30	400	550
10-12	245	K30	< 1212	550
12-13	195	K18	Full	300
13-14	195	K18	Full	300
14-15	195	K18	Full	300
15-16	195	K18	Full	300
16-17	195	K24	400	550
17-18	195	K30	1 pcs	150
18-19	195	K18	Full	300
20-19	245	K30	400	550
21-19	195	K24	None	
22-17	145	K24	None	
23-17	195	K18	None	
24-16	195	K24	None	
25-16	195	K30	None	
26-16	95	K18	None	
27-15	170	K30	None	
28-14	95	K18	None	
29-14	145	K24	None	

GENERAL SETTINGS:				
TIMBER THICKNESS: (mm)	3 x 45			
TRUSS CENTRES: (mm)	1200			
CLIMATE CLASS:	2			
SAFETY CLASS:	2			
LOADS (N/m²):				
SNOW LOAD (BASE VALUE):	1200			
WIND LOAD (BASE VALUE):	730			
LIVE LOAD:	NO	FIXED	RF	FREE RF
	1			500 0.50
DEAD LOADS: SEE TIMBER TABLE				
OTHER LOADS AS PER CALC. PRINT-OUT				

GENERAL DIRECTIONS:

THE STRUCTURE HAS BEEN CALCULATED USING COMPUTER PROGRAM "TRUSSCON". LIC.NO: 15323
 CODE TIMBER: BKR03 (BFS2005:18)
 CODE FASTENER: GODKÁNNANDE-REGLER No 4 1974.

VERSION: 2011 SR3c
 TIME: 15.06



WoodCon, Ltd
 REG.LV41203036961
 Ph:+37129332958
 e-mail: woodcon@woodcon.lv

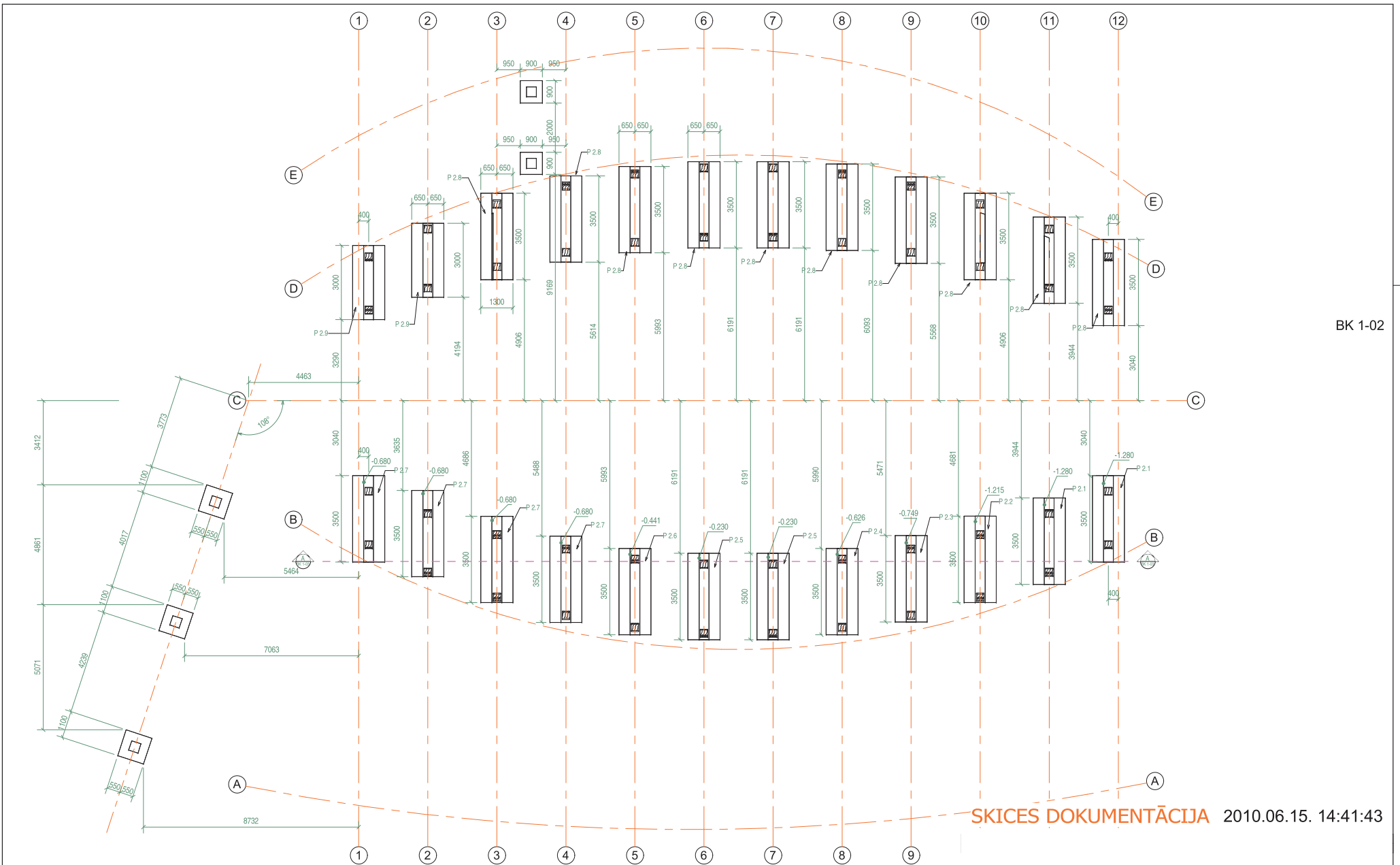
DRAWN CONSTR.BY	CHECKED	JOB NO.
		Complex_18
,20120409		

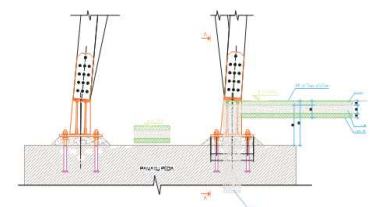
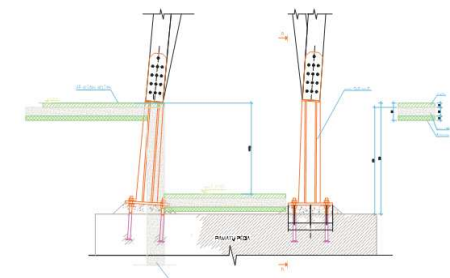
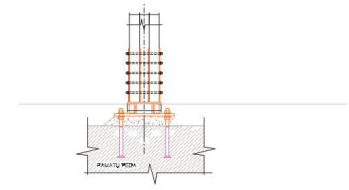
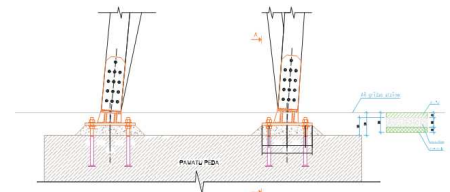
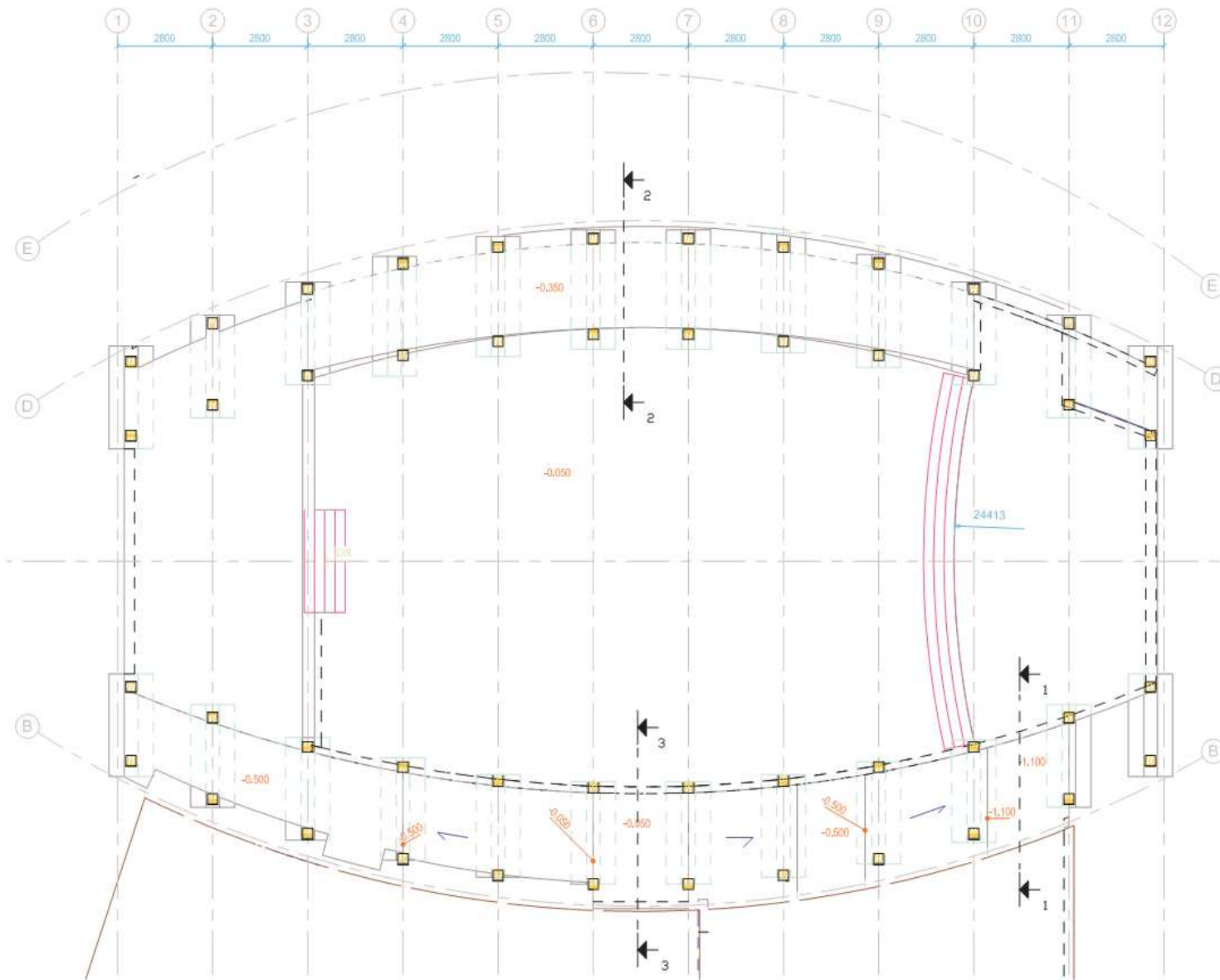
CODE TYPE NO.	DRAWING NUMBER	REG.
	T6	

SCALE 1:140

SKICES DOKUMENTĀCIJA 2010.06.15. 14:41:43

projekta bijis:	Andris Tomsons	
būvobjekts:	Berģu baznīca, Akmens iela 2, 2A	stadija: TP
rasēj. nos.:	Stabveida pamatu plāns	dāle-lapa: BK 1-02
būvproj. vad.:	Andris Tomsons	pasūt. nr.: MI 01 09
dālas vad.:	Designer	datums: 10.06.2010
izstrādāja:	Author	mērogs: 1 : 100
C:\Marchal\Berģu baznīca\BK_Berģu_bazn_Martins_r1		formats: A2





projekts: Andris Tomsons	stadija: TP	
būvobjekts: Berģu baznīca, Akmens iela 2, 2A	daje-lapa:	
rasēj. nos.:		
būvproj. vad.: Andris Tomsons	pasūt. nr.: MI 01 09	
dalās vad.: Designer	datums: 10.06.2010	caur. numurs:
izstrādāja: Author	mērogs: 1 : 100	
C:\Marche\Berģu baznīca\BK_Berģu bazn_Markis_r1		formats: A2

REVIT RASEJUMĀ AR ROKU VEIKTAS IZMAIŅAS NAV SPĒKĀ