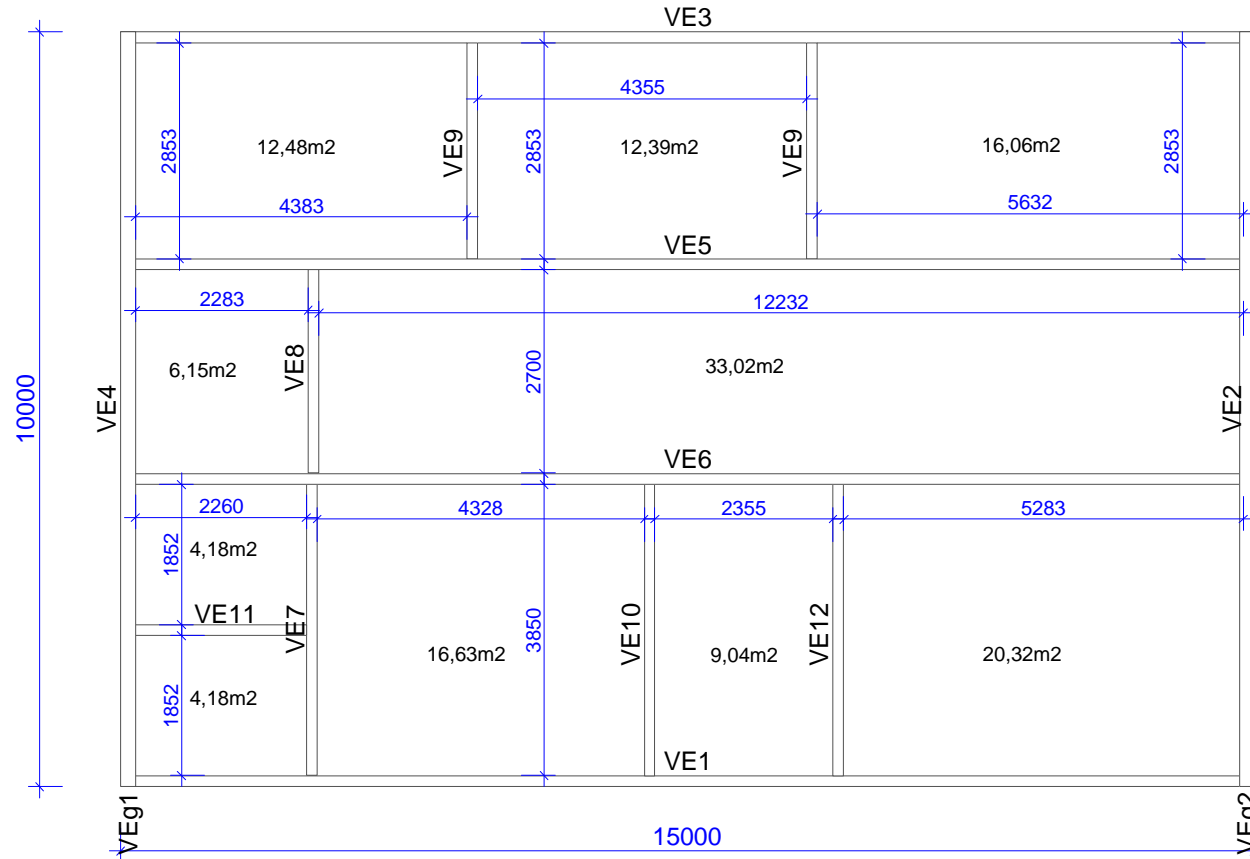


# FIRST FLOOR PLAN

First floor m2 134,45



## GENERAL NOTES

1. Walls, beams and columns on the drawing are assumed to be supporting.
2. This drawing and associated calculations is the property of WoodCon, Ltd.. Any copying, distribution and usage of these drawings without the permission from WoodCon, Ltd., is not allowed.
3. Loads:
  - Dead load roof: 250 N/m<sup>2</sup>
  - Dead load ceiling: 250 N/m<sup>2</sup>
  - Snow load: 1200 N/m<sup>2</sup>
  - Wind load, (velocity pressure): 965.592 N/m<sup>2</sup>
  - Live load attic: 1500 N/m<sup>2</sup>
4. It needs to be verified that the roof layout, trusses and supporting system is in compliance with the wishes/demands of the client before the production of the trusses starts.
5. Wind bracing of the roof:  
The trusses are stiff in their own plane, but needs to be braced out of plane according to the truss calculation. The bracing system of the building is not described by , but there is a reference to the assembly instruction and type drawing TB96-10.



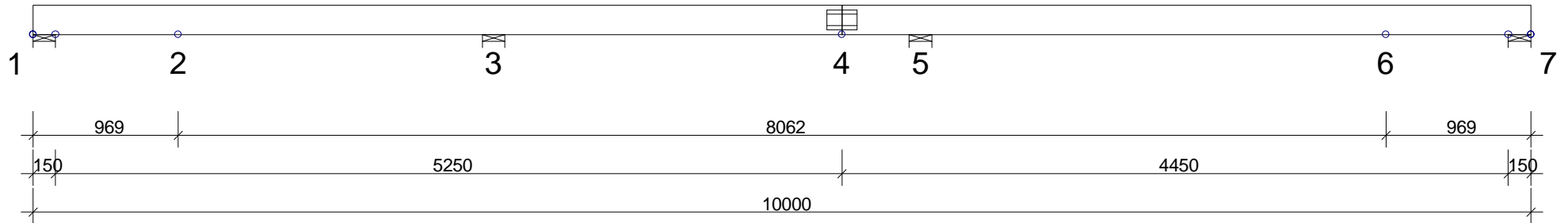
WoodCon, Ltd.  
REG. LV41203036961  
Ph.+37129332958  
e-mail:woodcon@woodcon.lv

DRAWN	CHECKED	JOB NO. Complex 1
		20120319

CODE TYPE NO.	DRAWING NUMBER	REG.
---------------	----------------	------

SCALE 1:100

BRACINGS ACCORDING TO TIMBER TABLE AND STABILITY OF THE TRUSS SYSTEM SHALL BE DESIGNED SEPARATELY



TIMBER: THICKNESS 70 mm				
CONSTR.-PART	DEPTH mm	GRADE	BRACING	LOAD N/m²
1-7	195	K24	Full	250

GENERAL SETTINGS:					
TIMBER THICKNESS: (mm)	70				
TRUSS CENTRES: (mm)	1200				
CLIMATE CLASS:	2				
SAFETY CLASS:	2				
LOADS (N/m²):					
SNOW LOAD (BASE VALUE):	1200				
WIND LOAD (BASE VALUE):	965				
LIVE LOAD:	NO	FIXED	RF	FREE	RF
	2	500	1.00	1500	0.33
	3			500	1.00
DEAD LOADS: SEE TIMBER TABLE					
OTHER LOADS AS PER CALC. PRINT-OUT					

**GENERAL DIRECTIONS:**

THE STRUCTURE HAS BEEN CALCULATED USING COMPUTER PROGRAM "TRUSSCON". LIC.NO: 15323  
 CODE TIMBER: BKR03 (BFS2005:18)  
 CODE FASTENER: GODKÄNNANDE-REGLER No 4 1974.

LOAD DISTRIBUTING FLOOR  
 GLUE NAILED 22 mm PARTICLE BOARD OR EQUIV.

VERSION: 2011 SR1c  
 TIME: 17.24



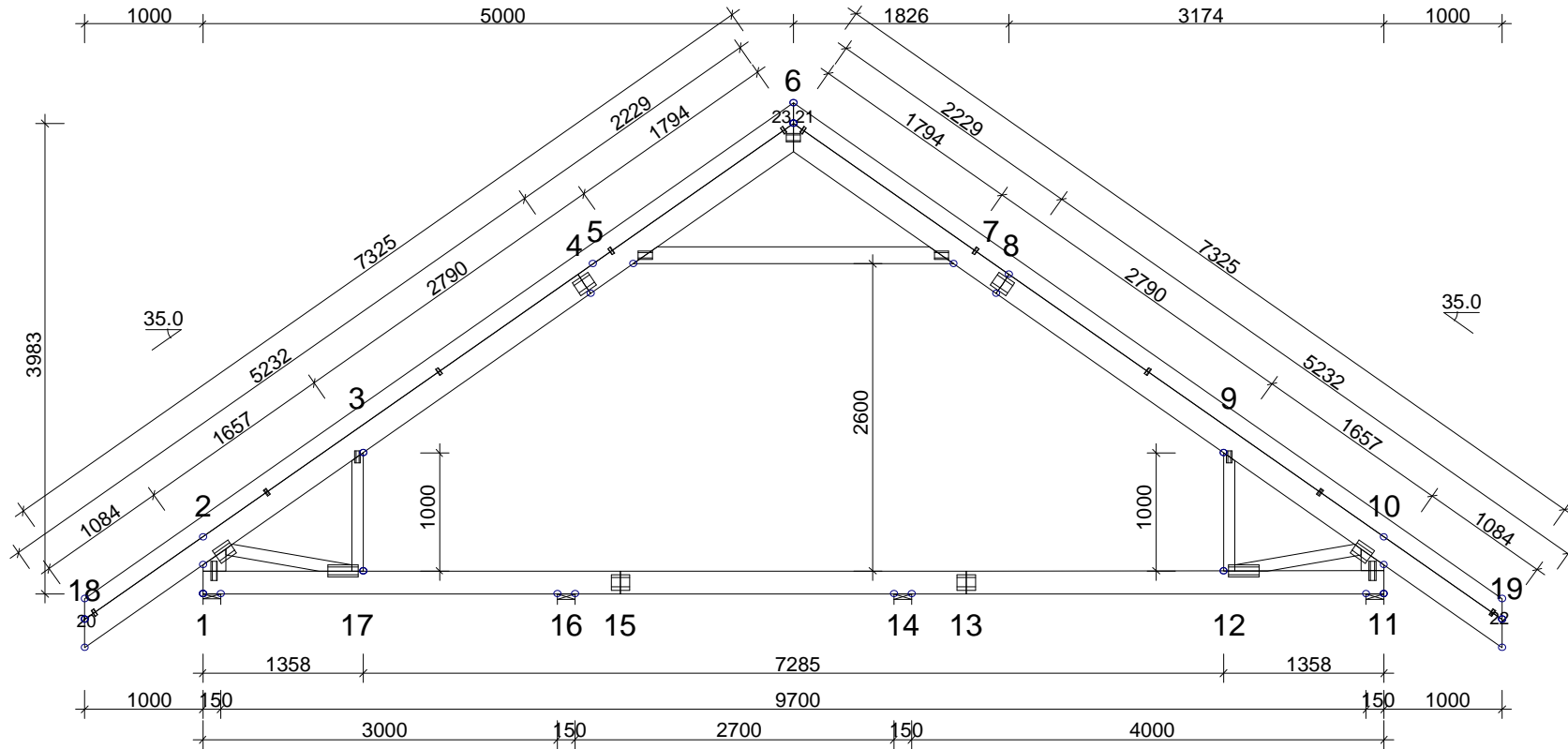
WoodCon, Ltd.  
 REG.LV41203036961  
 Ph.+37129332958  
 e-mail: woodcon@woodcon.lv

DRAWN CONSTR.BY	CHECKED	JOB NO.
,20120306		Complex_1

CODE TYPE NO.	DRAWING NUMBER	REG.

SCALE 1:40

BRACINGS ACCORDING TO TIMBER TABLE AND STABILITY OF THE TRUSS SYSTEM SHALL BE DESIGNED SEPARATELY



TIMBER: THICKNESS 45 mm				
CONSTR.-PART	DEPTH mm	GRADE	BRACING mm	LOAD N/m <sup>2</sup>
1-2	195	K24	None	150
6-18	195	K24	400	250
6-19	195	K24	400	250
10-11	195	K24	None	150
11-1	195	K24	Full	250
5-7	145	K24	Full	250
3-17	95	K24	None	150
9-12	95	K24	None	150
2-17	95	K24	None	
10-12	95	K24	None	
20-21	145	K24		
22-23	145	K24		

GENERAL SETTINGS:					
TIMBER THICKNESS: (mm)				45	
TRUSS CENTRES: (mm)				1200	
CLIMATE CLASS:				2	
SAFETY CLASS:				2	
LOADS (N/m <sup>2</sup> ):					
SNOW LOAD (BASE VALUE):				1200	
WIND LOAD (BASE VALUE):				965	
LIVE LOAD:	NO	FIXED	RF	FREE	RF
	1			500	0.50
	2	500	1.00	1500	0.33
	3			500	1.00
DEAD LOADS: SEE TIMBER TABLE					
OTHER LOADS AS PER CALC. PRINT-OUT					

BETWEEN EVERY B.CHORD THERE WILL BE 1x FLOOR JOIST(S)  
 LOAD SURFACE ON B.CHORD REDUCED CORRESP.  
 LOAD DISTRIBUTING FLOOR  
 GLUE NAILED 22 mm PARTICLE BOARD OR EQUIV.

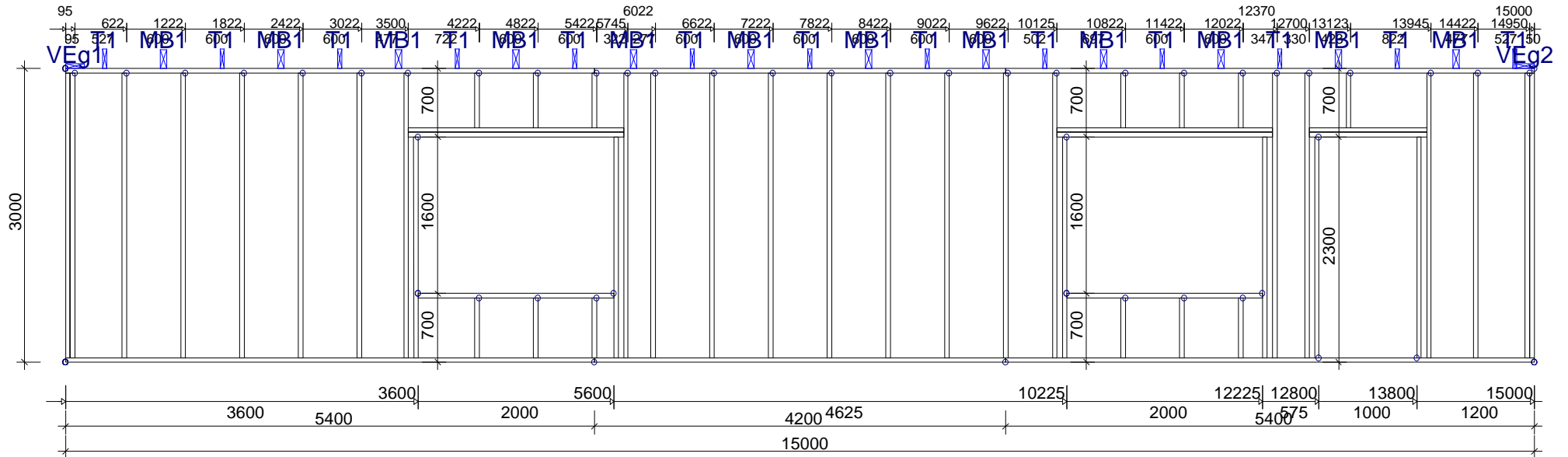
**GENERAL DIRECTIONS:**

THE STRUCTURE HAS BEEN CALCULATED USING  
 COMPUTER PROGRAM "TRUSSCON". LIC.NO: 15323  
 CODE TIMBER: BKR03 (BFS2005:18)  
 CODE FASTENER: GODKÄNNANDE-  
 REGLER No 4 1974.

VERSION: 2011 SR1c  
 TIME: 1.2.09

		WoodCon, Ltd. REG.LV41203036961 Ph.+37129332958 e-mail: woodcon@woodcon.lv		
		DRAWN CONSTR.BY	CHECKED	JOB NO. Complex_1
,20120319		CODE TYPE NO.	DRAWING NUMBER	REG.

BRACINGS ACCORDING TO TIMBER TABLE AND STABILITY OF THE TRUSS SYSTEM SHALL BE DESIGNED SEPARATELY



SEE CALC.PRINTOUT FOR INFORMATION NOT FOUND IN TABLES

TIMBER: THICKNESS 145 mm					GENERAL SETTINGS:	
CONSTR.-PART	DEPTH mm	GRADE	BRACING mm	LOAD N/m²	TIMBER THICKNESS: (mm)	145
1-2	45	K24		300	TRUSS CENTRES: (mm)	1200
2-5	45	K24			CLIMATE CLASS:	2
5-6	45	K24		300	SAFETY CLASS:	2
6-1	45	K24			<b>LOADS (N/m²):</b>	
9-10	45	K24			SNOW LOAD (BASE VALUE):	1200
11-12	45	K24			WIND LOAD (BASE VALUE):	965
13-14	45	K24			DEAD LOADS: SEE TIMBER TABLE	
15-16	45	K24			OTHER LOADS AS PER CALC. PRINT-OUT	
17-18	45	K24				
19-20	45	K24				
21-22	45	K24				
23-24	45	K24				
25-26	45	K24				
27-28	45	K24				
29-30	45	K24				
31-32	45	K24				
33-34	45	K24				
35-36	45	K24				
37-38	45	K24				
39-40	45	K24				
41-42	45	K24				
43-44	45	K24				
45-46	45	K24				
47-48	45	K24				
49-50	45	K24				
51-52	45	K24				
53-54	45	K24				

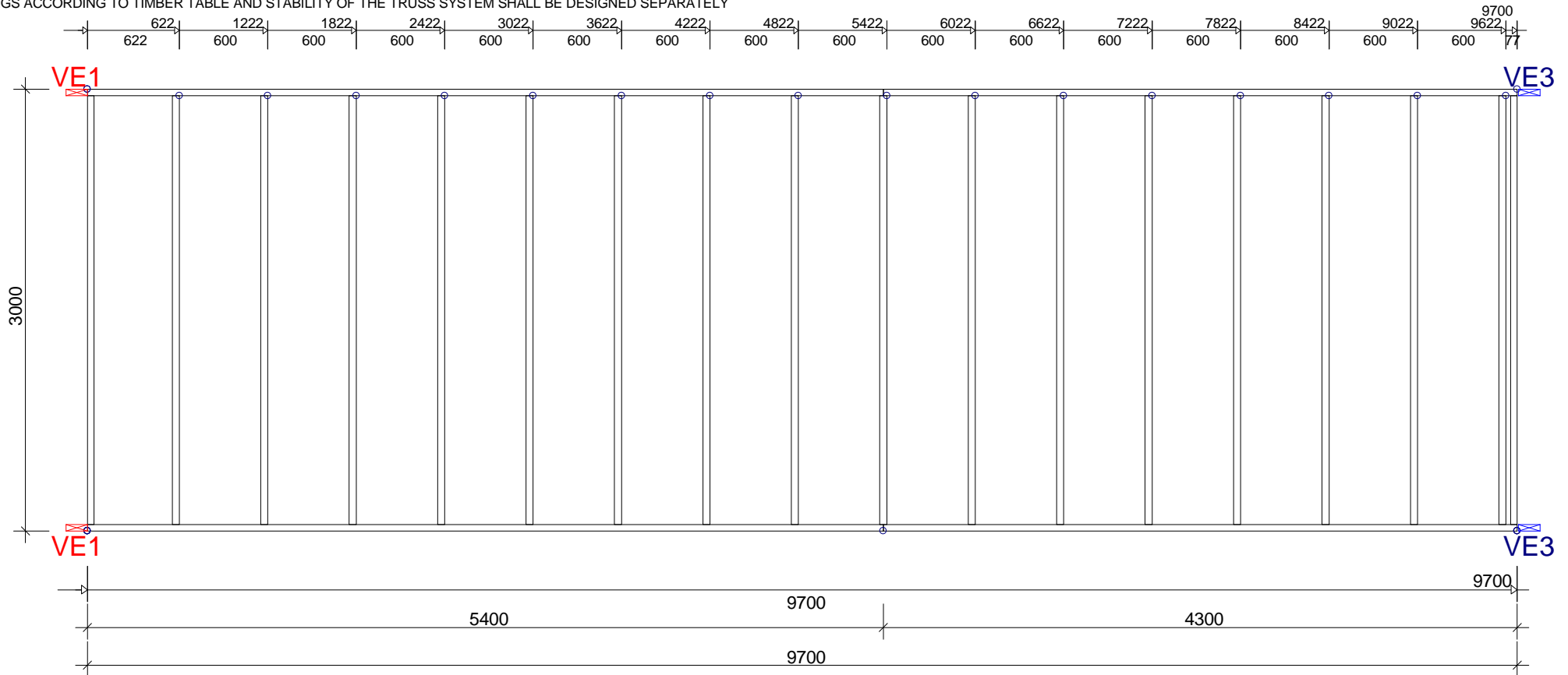
**GENERAL DIRECTIONS:**

THE STRUCTURE HAS BEEN CALCULATED USING COMPUTER PROGRAM "TRUSSCON". LIC.NO: 15323  
 CODE TIMBER: BKR03 (BFS2005:18)  
 CODE FASTENER: GODKÄNNANDE-REGLER No 4 1974.

VERSION: 2011 SR1c  
 TIME:

		WoodCon, Ltd. REG.LV41203036961 Ph.+37129332958 e-mail: woodcon@woodcon.lv		
		DRAWN CONSTR.BY CHECKED JOB NO. Complex_1	SCALE 1:60	
		CODE TYPE NO.	DRAWING NUMBER	REG.

BRACINGS ACCORDING TO TIMBER TABLE AND STABILITY OF THE TRUSS SYSTEM SHALL BE DESIGNED SEPARATELY



TIMBER: THICKNESS 145 mm				
CONSTR.-PART	DEPTH mm	GRADE	BRACING mm	LOAD N/m <sup>2</sup>
1-2	45	K24		300
2-4	45	K24		
4-5	45	K24		
5-1	45	K24		
7-8	45	K24		
9-10	45	K24		
11-12	45	K24		
13-14	45	K24		
15-16	45	K24		
17-18	45	K24		
19-20	45	K24		
21-22	45	K24		
23-24	45	K24		
25-26	45	K24		
27-28	45	K24		
29-30	45	K24		
31-32	45	K24		
33-34	45	K24		
35-36	45	K24		
37-38	45	K24		

GENERAL SETTINGS:	
TIMBER THICKNESS: (mm)	145
TRUSS CENTRES: (mm)	1200
CLIMATE CLASS:	2
SAFETY CLASS:	2
LOADS (N/m <sup>2</sup> ):	
SNOW LOAD (BASE VALUE):	1200
WIND LOAD (BASE VALUE):	965
DEAD LOADS: SEE TIMBER TABLE	
OTHER LOADS AS PER CALC. PRINT-OUT	

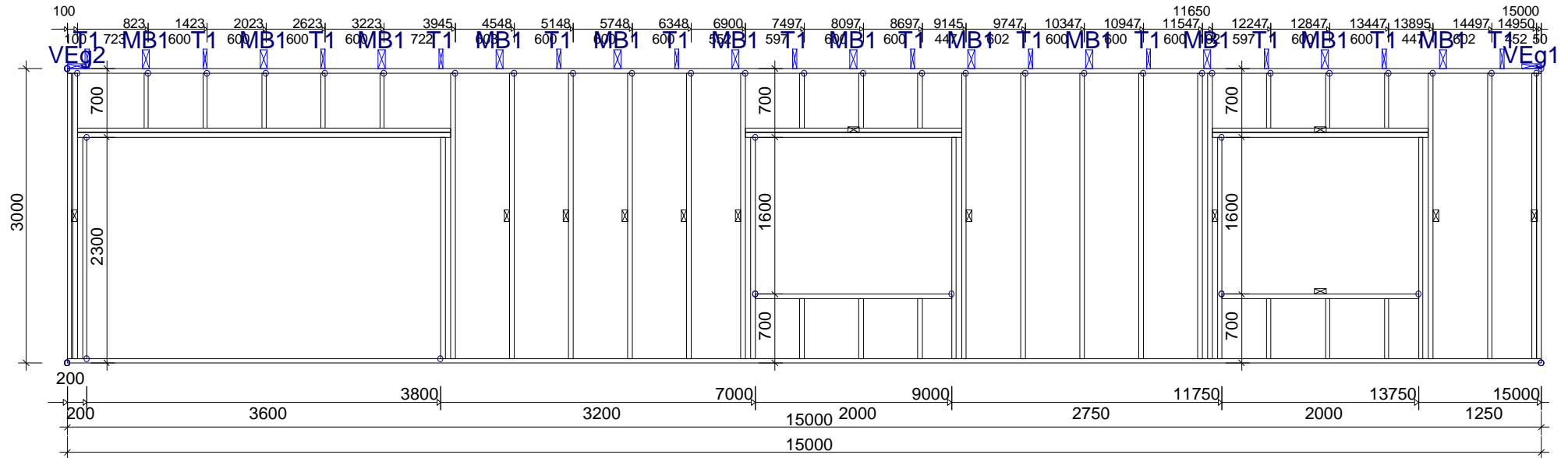
**GENERAL DIRECTIONS:**  
 THE STRUCTURE HAS BEEN CALCULATED USING COMPUTER PROGRAM "TRUSSCON". LIC.NO: 15323  
 CODE TIMBER: BKR03 (BFS2005:18)  
 CODE FASTENER: GODKÄNNANDE-REGLER No 4 1974.

VERSION: 2011 SR1c  
 TIME:

		WoodCon, Ltd. REG.LV41203036961 Ph.+37129332958 e-mail: woodcon@woodcon.lv	
		DRAWN CONSTR.BY CHECKED JOB NO. Complex_1	SCALE 1:40 REG.
CODE TYPE NO.		DRAWING NUMBER	

BRACINGS ACCORDING TO TIMBER TABLE AND STABILITY OF THE TRUSS SYSTEM SHALL BE DESIGNED SEPARATELY

☒ INDICATES BRACING



SEE CALC.PRINTOUT FOR INFORMATION NOT FOUND IN TABLES

TIMBER: THICKNESS 145 mm					GENERAL SETTINGS:	
CONSTR.-PART	DEPTH mm	GRADE	BRACING mm/pcs	LOAD N/m²	TIMBER THICKNESS: (mm)	145
1-2	45	K24		300	TRUSS CENTRES: (mm)	1200
2-3	45	K24			CLIMATE CLASS:	2
3-4	45	K24			SAFETY CLASS:	2
4-1	45	K24			<b>LOADS (N/m²):</b>	
10-11	45	K24			SNOW LOAD (BASE VALUE):	0
12-13	45	K24			WIND LOAD (BASE VALUE):	965
14-15	45	K24			DEAD LOADS: SEE TIMBER TABLE	
16-17	45	K24			OTHER LOADS AS PER CALC. PRINT-OUT	
18-19	45	K24				
20-21	45	K24				
22-23	45	K24				
24-25	45	K24				
26-27	45	K24				
28-29	45	K24				
30-31	45	K24				
32-33	45	K24				
34-35	45	K24				
36-37	45	K24				
38-39	45	K24				
40-41	45	K30				
42-43	45	K30				
44-45	45	K30				
46-47	45	K30				
48-49	45	K24				
50-51	45	K24				

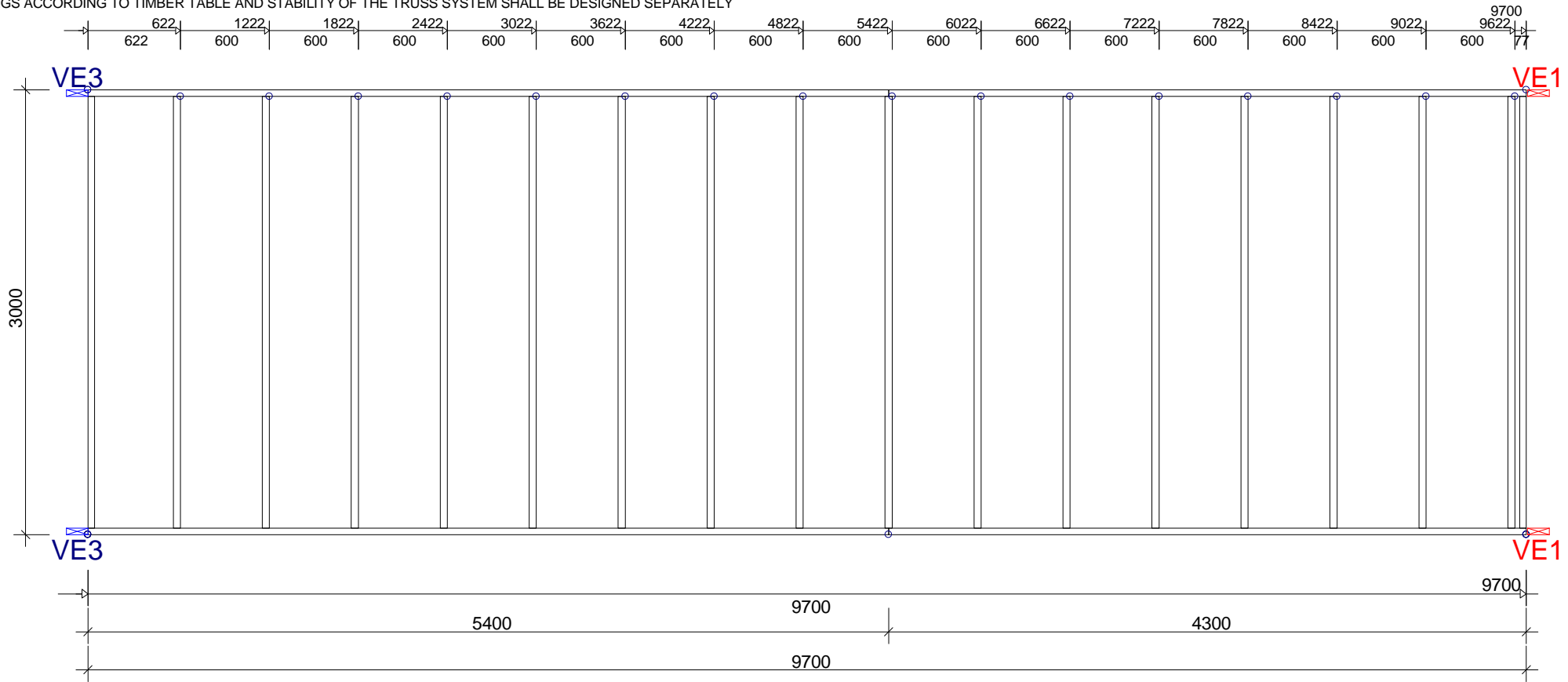
**GENERAL DIRECTIONS:**

THE STRUCTURE HAS BEEN CALCULATED USING COMPUTER PROGRAM "TRUSSCON". LIC.NO: 15323  
 CODE TIMBER: BKR03 (BFS2005:18)  
 CODE FASTENER: GODKÄNNANDE-REGLER No 4 1974.

VERSION: 2011 SR1c  
 TIME:

		WoodCon, Ltd. REG.LV41203036961 Ph.+37129332958 e-mail: woodcon@woodcon.lv	
		DRAWN CONSTR.BY CHECKED JOB NO. Complex_1	SCALE 1:60 CODE TYPE NO. DRAWING NUMBER REG.

BRACINGS ACCORDING TO TIMBER TABLE AND STABILITY OF THE TRUSS SYSTEM SHALL BE DESIGNED SEPARATELY



TIMBER: THICKNESS 145 mm				
CONSTR.-PART	DEPTH mm	GRADE	BRACING mm	LOAD N/m²
1-2	45	K24		300
2-4	45	K24		
4-5	45	K24		
5-1	45	K24		
7-8	45	K24		
9-10	45	K24		
11-12	45	K24		
13-14	45	K24		
15-16	45	K24		
17-18	45	K24		
19-20	45	K24		
21-22	45	K24		
23-24	45	K24		
25-26	45	K24		
27-28	45	K24		
29-30	45	K24		
31-32	45	K24		
33-34	45	K24		
35-36	45	K24		
37-38	45	K24		

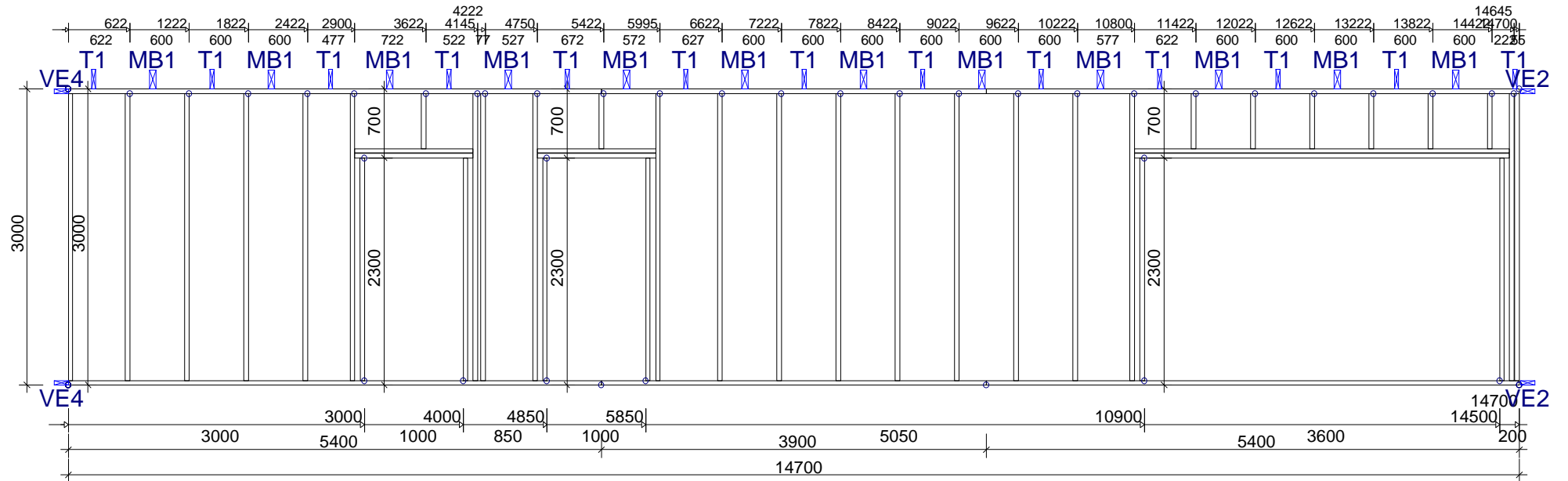
GENERAL SETTINGS:	
TIMBER THICKNESS: (mm)	145
TRUSS CENTRES: (mm)	1200
CLIMATE CLASS:	2
SAFETY CLASS:	2
LOADS (N/m²):	
SNOW LOAD (BASE VALUE):	1200
WIND LOAD (BASE VALUE):	965
DEAD LOADS: SEE TIMBER TABLE	
OTHER LOADS AS PER CALC. PRINT-OUT	

**GENERAL DIRECTIONS:**  
 THE STRUCTURE HAS BEEN CALCULATED USING COMPUTER PROGRAM "TRUSSCON". LIC.NO: 15323  
 CODE TIMBER: BKR03 (BFS2005:18)  
 CODE FASTENER: GODKÄNNANDE-REGLER No 4 1974.

VERSION: 2011 SR1c  
 TIME:

		WoodCon, Ltd. REG.LV41203036961 Ph.+37129332958 e-mail: woodcon@woodcon.lv	
		DRAWN CONSTR.BY CHECKED JOB NO. Complex_1	SCALE 1:40 REG.
CODE TYPE NO.		DRAWING NUMBER	

BRACINGS ACCORDING TO TIMBER TABLE AND STABILITY OF THE TRUSS SYSTEM SHALL BE DESIGNED SEPARATELY



SEE CALC.PRINTOUT FOR INFORMATION NOT FOUND IN TABLES

TIMBER: THICKNESS 145 mm					GENERAL SETTINGS:	
CONSTR.-PART	DEPTH mm	GRADE	BRACING mm	LOAD N/m²	TIMBER THICKNESS: (mm)	145
1-2	45	K24		300	TRUSS CENTRES: (mm)	1200
2-5	45	K24			CLIMATE CLASS:	2
5-6	45	K24			SAFETY CLASS:	2
6-1	45	K24			<b>LOADS (N/m²):</b>	
9-10	45	K24			DEAD LOADS: SEE TIMBER TABLE OTHER LOADS AS PER CALC. PRINT-OUT	
11-12	45	K24				
13-14	45	K24				
15-16	45	K24				
17-18	45	K24				
19-20	45	K24				
21-22	45	K24				
23-24	45	K24				
25-26	45	K24				
27-28	45	K24				
29-30	45	K24				
31-32	45	K24				
33-34	45	K24				
35-36	45	K24				
37-38	45	K24				
41-42	45	K24				
39-40	45	K24				
43-44	45	K24				
45-46	45	K24				
47-48	45	K24				
49-50	45	K24				

**GENERAL DIRECTIONS:**

THE STRUCTURE HAS BEEN CALCULATED USING COMPUTER PROGRAM "TRUSSCON". LIC.NO: 15323  
 CODE TIMBER: BKR03 (BFS2005:18)  
 CODE FASTENER: GODKÄNNANDE-REGLER No 4 1974.

VERSION: 2011 SR1c  
 TIME:



WoodCon, Ltd.  
 REG.LV41203036961  
 Ph.+37129332958  
 e-mail: woodcon@woodcon.lv

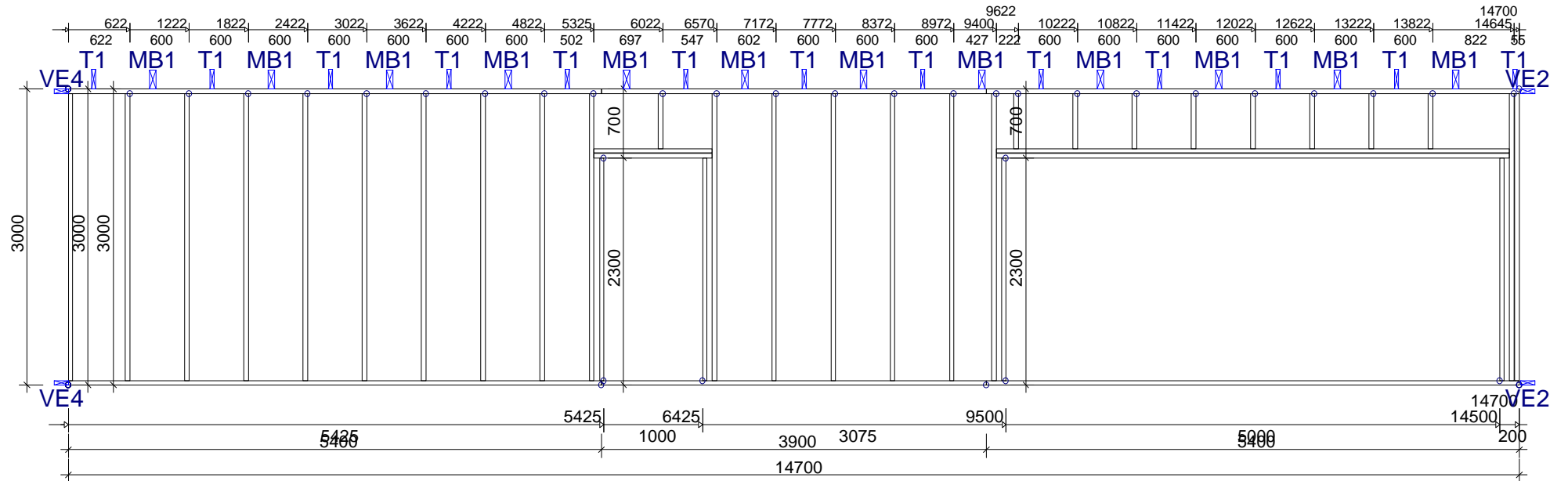
DRAWN CONSTR.BY	CHECKED	JOB NO.
		Complex_1

SCALE 1:60

CODE TYPE NO.	DRAWING NUMBER	REG.



BRACINGS ACCORDING TO TIMBER TABLE AND STABILITY OF THE TRUSS SYSTEM SHALL BE DESIGNED SEPARATELY



SEE CALC.PRINTOUT FOR INFORMATION NOT FOUND IN TABLES

TIMBER: THICKNESS 145 mm					GENERAL SETTINGS:	
CONSTR.-PART	DEPTH mm	GRADE	BRACING mm	LOAD N/m²	TIMBER THICKNESS: (mm)	145
1-2	45	K24		300	TRUSS CENTRES: (mm)	1200
2-5	45	K24			CLIMATE CLASS:	2
5-6	45	K24		300	SAFETY CLASS:	2
6-1	45	K24			<b>LOADS (N/m²):</b>	
9-10	45	K24				
11-12	45	K24				
13-14	45	K24				
15-16	45	K24				
17-18	45	K24				
19-20	45	K24				
21-22	45	K24				
23-24	45	K24				
25-26	45	K24				
27-28	45	K24				
29-30	45	K24				
31-32	45	K24				
33-34	45	K24				
35-36	45	K24				
37-38	45	K24				
39-40	45	K24				
41-42	45	K24				
43-44	45	K24				
61-62	45	K24				
45-46	45	K24				
47-48	45	K24				
					DEAD LOADS: SEE TIMBER TABLE	
					OTHER LOADS AS PER CALC. PRINT-OUT	

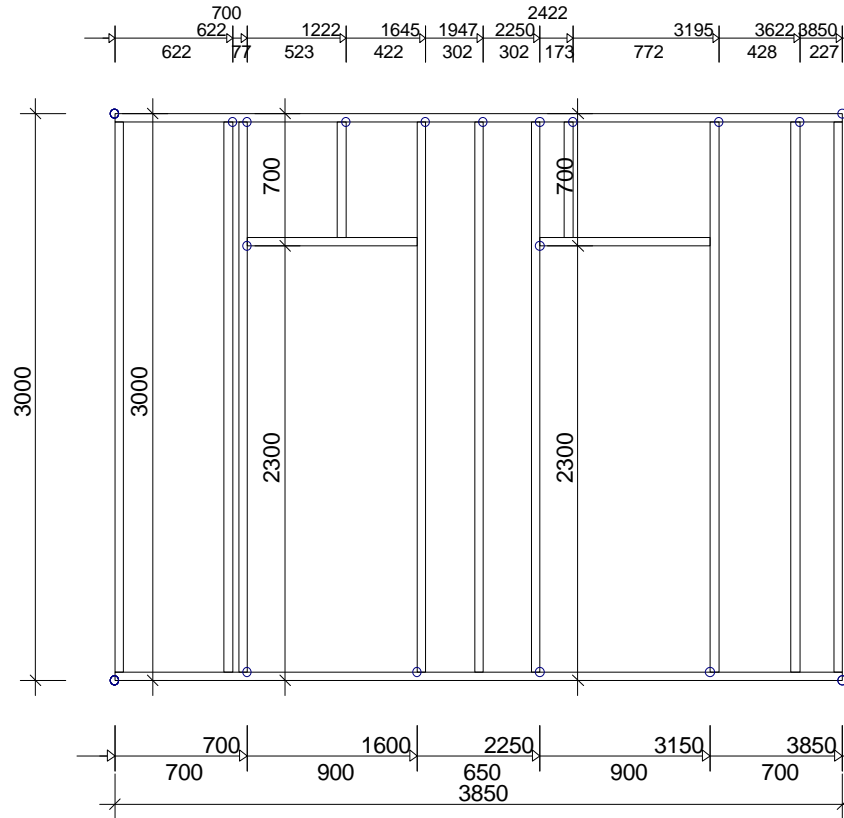
**GENERAL DIRECTIONS:**

THE STRUCTURE HAS BEEN CALCULATED USING COMPUTER PROGRAM "TRUSSCON". LIC.NO: 15323  
 CODE TIMBER: BKR03 (BFS2005:18)  
 CODE FASTENER: GODKÄNNANDE-REGLER No 4 1974.

VERSION: 2011 SR1c  
 TIME:

		WoodCon, Ltd. REG.LV41203036961 Ph.+37129332958 e-mail: woodcon@woodcon.lv		
		DRAWN CONSTR.BY	CHECKED	JOB NO. Complex_1
		CODE TYPE NO.	DRAWING NUMBER	REG.

BRACINGS ACCORDING TO TIMBER TABLE AND STABILITY OF THE TRUSS SYSTEM SHALL BE DESIGNED SEPARATELY



TIMBER: THICKNESS 145 mm				
CONSTR.-PART	DEPTH mm	GRADE	BRACING mm	LOAD N/m²
1-2	45	K24		300
2-3	45	K24		
3-4	45	K24		
4-1	45	K24		
5-6	45	K24		
7-8	45	K24		
9-10	45	K24		
11-12	45	K24		
13-14	45	K24		
15-16	45	K24		
17-18	45	K24		
19-20	45	K24		
21-22	45	K24		
23-24	45	K24		
25-26	45	K24		

GENERAL SETTINGS:	
TIMBER THICKNESS: (mm)	145
TRUSS CENTRES: (mm)	1200
CLIMATE CLASS:	2
SAFETY CLASS:	2
LOADS (N/m²):	
DEAD LOADS: SEE TIMBER TABLE	
OTHER LOADS AS PER CALC. PRINT-OUT	

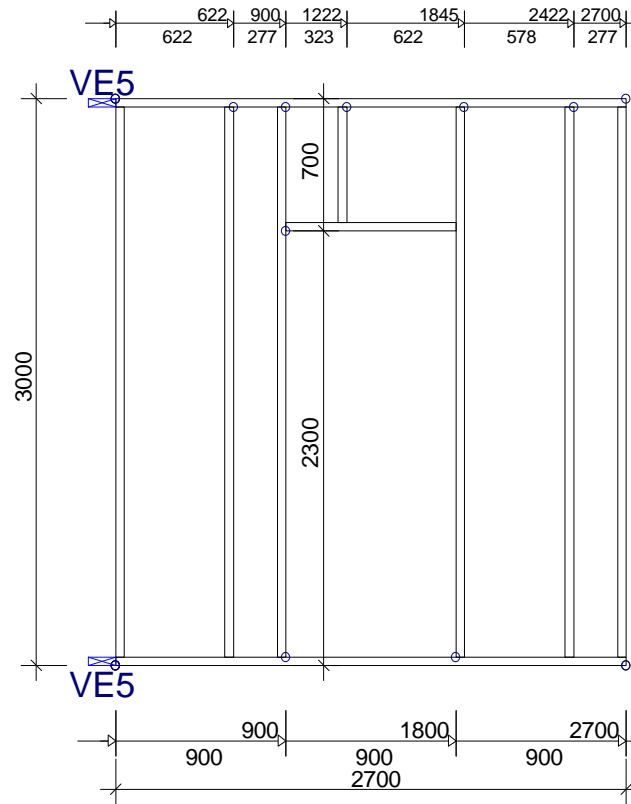
**GENERAL DIRECTIONS:**

THE STRUCTURE HAS BEEN CALCULATED USING COMPUTER PROGRAM "TRUSSCON". LIC.NO: 15323  
 CODE TIMBER: BKR03 (BFS2005:18)  
 CODE FASTENER: GODKÄNNANDE-REGLER No 4 1974.

VERSION: 2011 SR1c  
 TIME:

		WoodCon, Ltd. REG.LV41203036961 Ph.+37129332958 e-mail: woodcon@woodcon.lv	
		DRAWN CONSTR.BY CHECKED JOB NO. Complex_1	SCALE 1:40 REG.
CODE TYPE NO.		DRAWING NUMBER	

BRACINGS ACCORDING TO TIMBER TABLE AND STABILITY OF THE TRUSS SYSTEM SHALL BE DESIGNED SEPARATELY



TIMBER: THICKNESS 145 mm				
CONSTR.-PART	DEPTH mm	GRADE	BRACING mm	LOAD N/m <sup>2</sup>
1-2	45	K24		300
2-3	45	K24		
3-4	45	K24		
4-1	45	K24		
5-6	45	K24		
7-8	45	K24		
9-10	45	K24		
11-12	45	K24		
13-14	45	K24		
15-16	45	K24		

GENERAL SETTINGS:	
TIMBER THICKNESS: (mm)	145
TRUSS CENTRES: (mm)	1200
CLIMATE CLASS:	2
SAFETY CLASS:	2
LOADS (N/m <sup>2</sup> ):	
DEAD LOADS: SEE TIMBER TABLE	
OTHER LOADS AS PER CALC. PRINT-OUT	

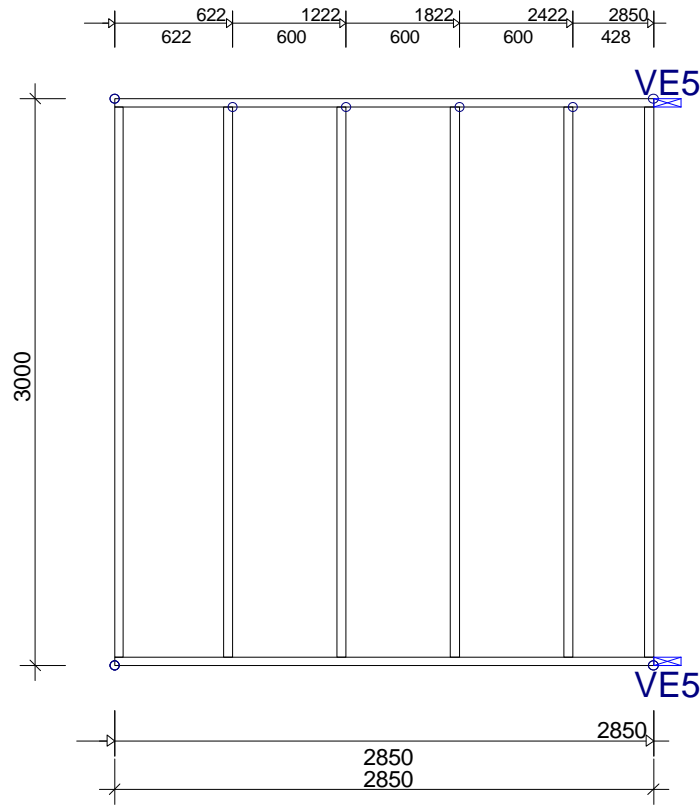
**GENERAL DIRECTIONS:**

THE STRUCTURE HAS BEEN CALCULATED USING COMPUTER PROGRAM "TRUSSCON". LIC.NO: 15323  
 CODE TIMBER: BKR03 (BFS2005:18)  
 CODE FASTENER: GODKÄNNANDE-REGLER No 4 1974.

VERSION: 2011 SR1c  
 TIME:

		WoodCon, Ltd. REG.LV41203036961 Ph.+37129332958 e-mail: woodcon@woodcon.lv		
		DRAWN CONSTR.BY CHECKED JOB NO. Complex_1	SCALE 1:40	
		CODE TYPE NO.	DRAWING NUMBER	REG.

BRACINGS ACCORDING TO TIMBER TABLE AND STABILITY OF THE TRUSS SYSTEM SHALL BE DESIGNED SEPARATELY



TIMBER: THICKNESS 145 mm				
CONSTR.-PART	DEPTH mm	GRADE	BRACING mm	LOAD N/m <sup>2</sup>
1-2	45	K24		300
2-3	45	K24		
3-4	45	K24		
4-1	45	K24		
5-6	45	K24		
7-8	45	K24		
9-10	45	K24		300
11-12	45	K24		

GENERAL SETTINGS:	
TIMBER THICKNESS: (mm)	145
TRUSS CENTRES: (mm)	1200
CLIMATE CLASS:	2
SAFETY CLASS:	2
LOADS (N/m <sup>2</sup> ):	
DEAD LOADS: SEE TIMBER TABLE	
OTHER LOADS AS PER CALC. PRINT-OUT	

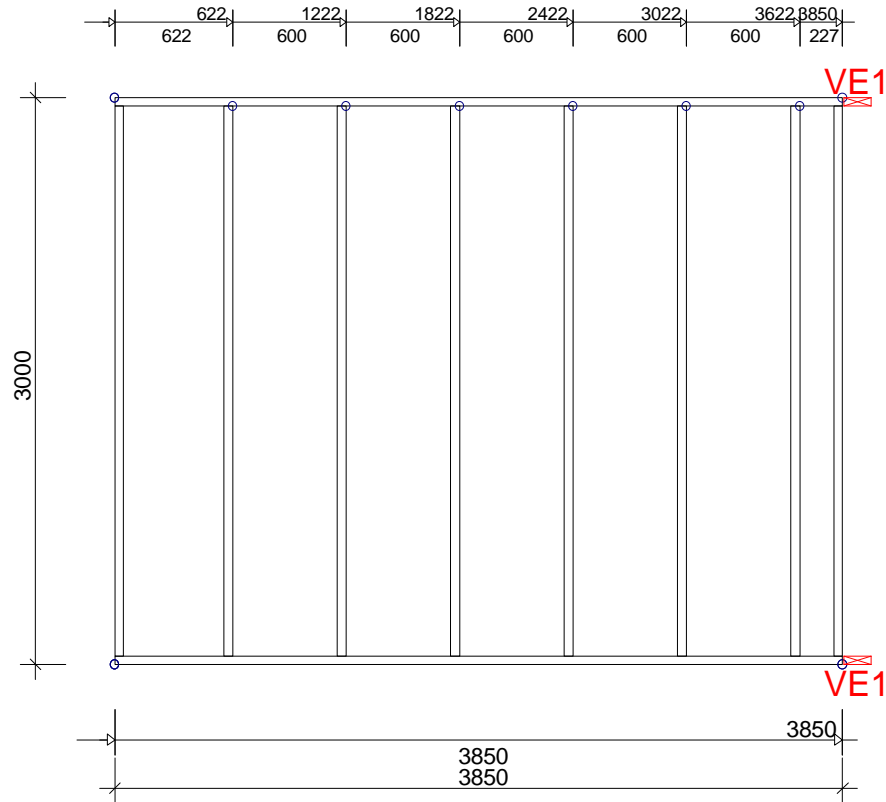
**GENERAL DIRECTIONS:**

THE STRUCTURE HAS BEEN CALCULATED USING COMPUTER PROGRAM "TRUSSCON". LIC.NO: 15323  
 CODE TIMBER: BKR03 (BFS2005:18)  
 CODE FASTENER: GODKÄNNANDE-REGLER No 4 1974.

VERSION: 2011 SR1c  
 TIME:

		WoodCon, Ltd. REG.LV41203036961 Ph.+37129332958 e-mail: woodcon@woodcon.lv	
		DRAWN CONSTR.BY CHECKED JOB NO. Complex_1	SCALE 1:40 REG.
		CODE TYPE NO.	DRAWING NUMBER

BRACINGS ACCORDING TO TIMBER TABLE AND STABILITY OF THE TRUSS SYSTEM SHALL BE DESIGNED SEPARATELY



TIMBER: THICKNESS 145 mm				
CONSTR.-PART	DEPTH mm	GRADE	BRACING mm	LOAD N/m²
1-2	45	K24		300
2-3	45	K24		
3-4	45	K24		
4-1	45	K24		
5-6	45	K24		
7-8	45	K24		
9-10	45	K24		
11-12	45	K24		
13-14	45	K24		300
15-16	45	K24		

GENERAL SETTINGS:	
TIMBER THICKNESS: (mm)	145
TRUSS CENTRES: (mm)	1200
CLIMATE CLASS:	2
SAFETY CLASS:	2
LOADS (N/m²):	
DEAD LOADS: SEE TIMBER TABLE	
OTHER LOADS AS PER CALC. PRINT-OUT	

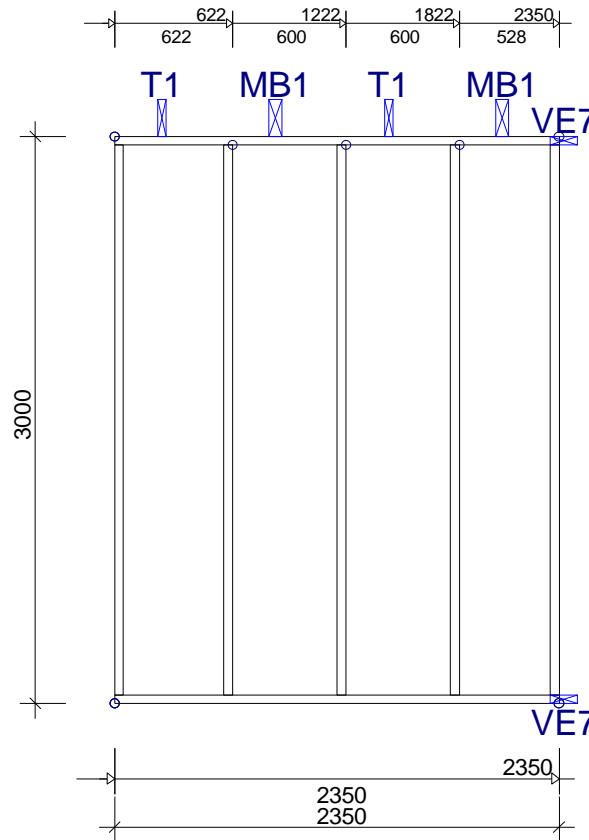
**GENERAL DIRECTIONS:**

THE STRUCTURE HAS BEEN CALCULATED USING COMPUTER PROGRAM "TRUSSCON". LIC.NO: 15323  
 CODE TIMBER: BKR03 (BFS2005:18)  
 CODE FASTENER: GODKÄNNANDE-REGLER No 4 1974.

VERSION: 2011 SR1c  
 TIME:

		WoodCon, Ltd. REG.LV41203036961 Ph.+37129332958 e-mail: woodcon@woodcon.lv	
		DRAWN CONSTR.BY CHECKED JOB NO. Complex_1	SCALE 1:40
		CODE TYPE NO.	DRAWING NUMBER
		REG.	

BRACINGS ACCORDING TO TIMBER TABLE AND STABILITY OF THE TRUSS SYSTEM SHALL BE DESIGNED SEPARATELY



TIMBER: THICKNESS 145 mm				
CONSTR.-PART	DEPTH mm	GRADE	BRACING mm	LOAD N/m²
1-2	45	K24		300
2-3	45	K24		
3-4	45	K24		
4-1	45	K24		
5-6	45	K24		
7-8	45	K24		
9-10	45	K24		

GENERAL SETTINGS:	
TIMBER THICKNESS: (mm)	145
TRUSS CENTRES: (mm)	1200
CLIMATE CLASS:	2
SAFETY CLASS:	2
LOADS (N/m²):	
DEAD LOADS: SEE TIMBER TABLE	
OTHER LOADS AS PER CALC. PRINT-OUT	

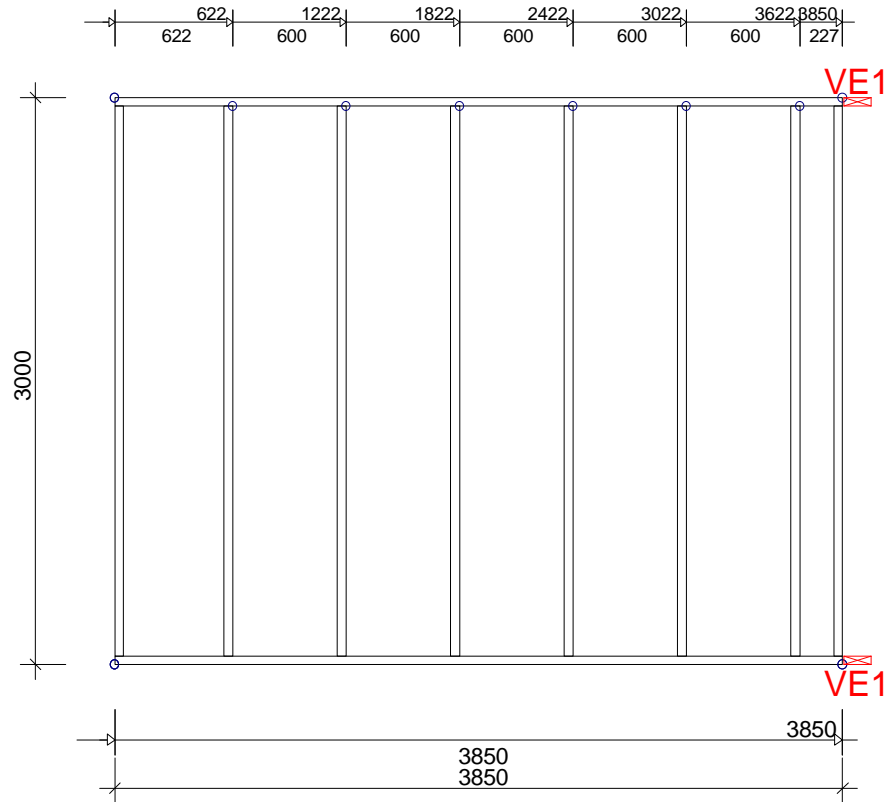
**GENERAL DIRECTIONS:**

THE STRUCTURE HAS BEEN CALCULATED USING COMPUTER PROGRAM "TRUSSCON". LIC.NO: 15323  
 CODE TIMBER: BKR03 (BFS2005:18)  
 CODE FASTENER: GODKÄNNANDE-REGLER No 4 1974.

VERSION: 2011 SR1c  
 TIME:

		WoodCon, Ltd. REG.LV41203036961 Ph.+37129332958 e-mail: woodcon@woodcon.lv		
		DRAWN CONSTR.BY CHECKED JOB NO. Complex_1	SCALE 1:40	
		CODE TYPE NO.	DRAWING NUMBER	REG.

BRACINGS ACCORDING TO TIMBER TABLE AND STABILITY OF THE TRUSS SYSTEM SHALL BE DESIGNED SEPARATELY



TIMBER: THICKNESS 145 mm				
CONSTR.-PART	DEPTH mm	GRADE	BRACING mm	LOAD N/m²
1-2	45	K24		300
2-3	45	K24		
3-4	45	K24		300
4-1	45	K24		
5-6	45	K24		
7-8	45	K24		
9-10	45	K24		
11-12	45	K24		
13-14	45	K24		
15-16	45	K24		

GENERAL SETTINGS:	
TIMBER THICKNESS: (mm)	145
TRUSS CENTRES: (mm)	1200
CLIMATE CLASS:	2
SAFETY CLASS:	2
LOADS (N/m²):	
DEAD LOADS: SEE TIMBER TABLE	
OTHER LOADS AS PER CALC. PRINT-OUT	

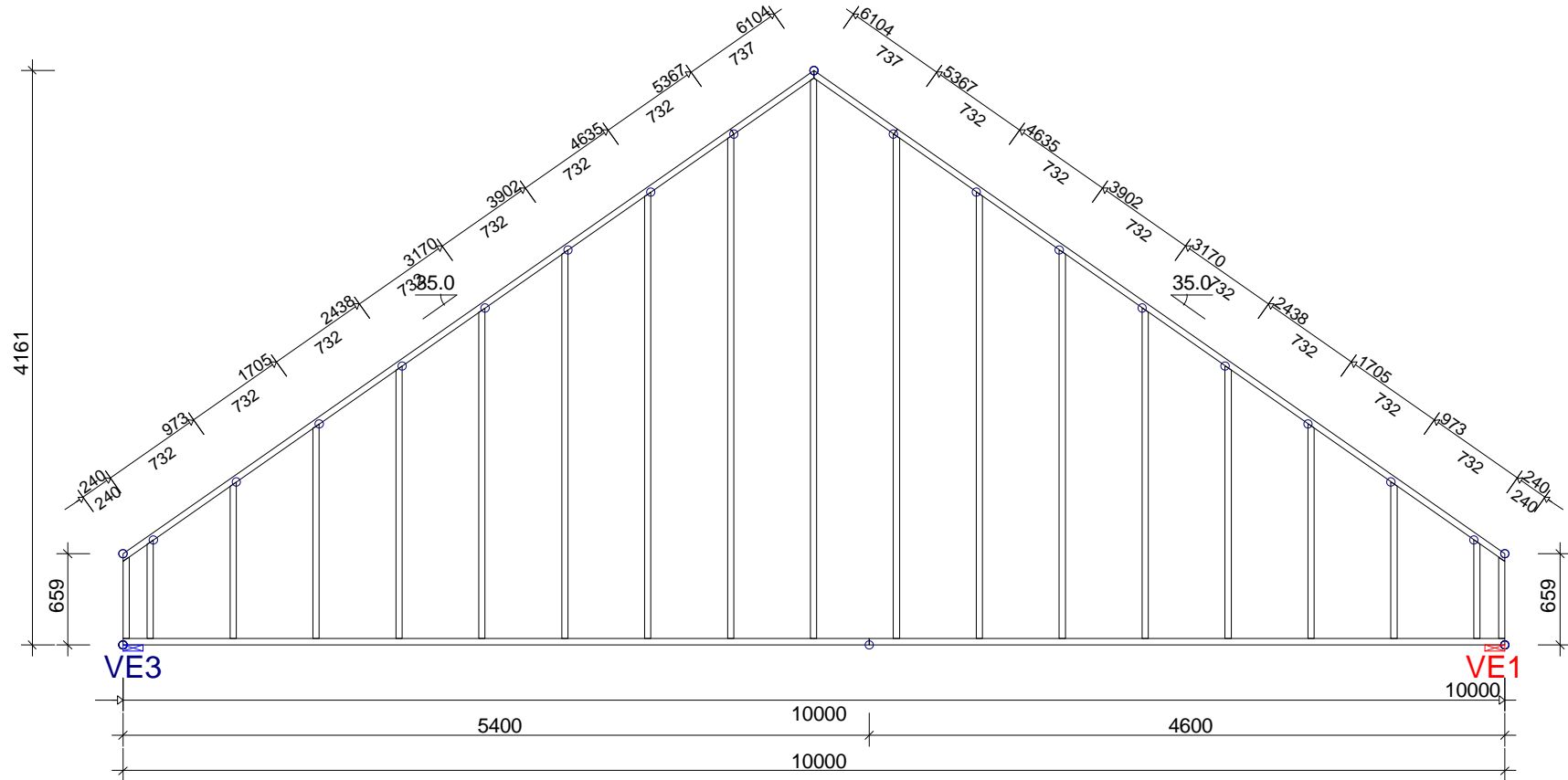
**GENERAL DIRECTIONS:**

THE STRUCTURE HAS BEEN CALCULATED USING COMPUTER PROGRAM "TRUSSCON". LIC.NO: 15323  
 CODE TIMBER: BKR03 (BFS2005:18)  
 CODE FASTENER: GODKÄNNANDE-REGLER No 4 1974.

VERSION: 2011 SR1c  
 TIME:

		WoodCon, Ltd. REG.LV41203036961 Ph.+37129332958 e-mail: woodcon@woodcon.lv	
		DRAWN CONSTR.BY CHECKED JOB NO. Complex_1	SCALE 1:40
CODE TYPE NO.	DRAWING NUMBER	REG.	

BRACINGS ACCORDING TO TIMBER TABLE AND STABILITY OF THE TRUSS SYSTEM SHALL BE DESIGNED SEPARATELY



TIMBER: THICKNESS 195 mm				
CONSTR.-PART	DEPTH mm	GRADE	BRACING mm	LOAD N/m <sup>2</sup>
1-2	45	K24		
2-4	45	K24		
4-6	45	K24		300
6-7	45	K24		300
7-1	45	K24		300
9-10	45	K24		
11-12	45	K24		
13-14	45	K24		
15-16	45	K24		
17-18	45	K24		
19-20	45	K24		
21-22	45	K24		
23-24	45	K24		
25-26	45	K24		
27-28	45	K24		
29-30	45	K24		
31-32	45	K24		
33-34	45	K24		
35-36	45	K24		
37-38	45	K24		
39-40	45	K24		
41-42	45	K24		

GENERAL SETTINGS:	
TIMBER THICKNESS: (mm)	195
TRUSS CENTRES: (mm)	1200
CLIMATE CLASS:	2
SAFETY CLASS:	2
LOADS (N/m <sup>2</sup> ):	
DEAD LOADS: SEE TIMBER TABLE	
OTHER LOADS AS PER CALC. PRINT-OUT	

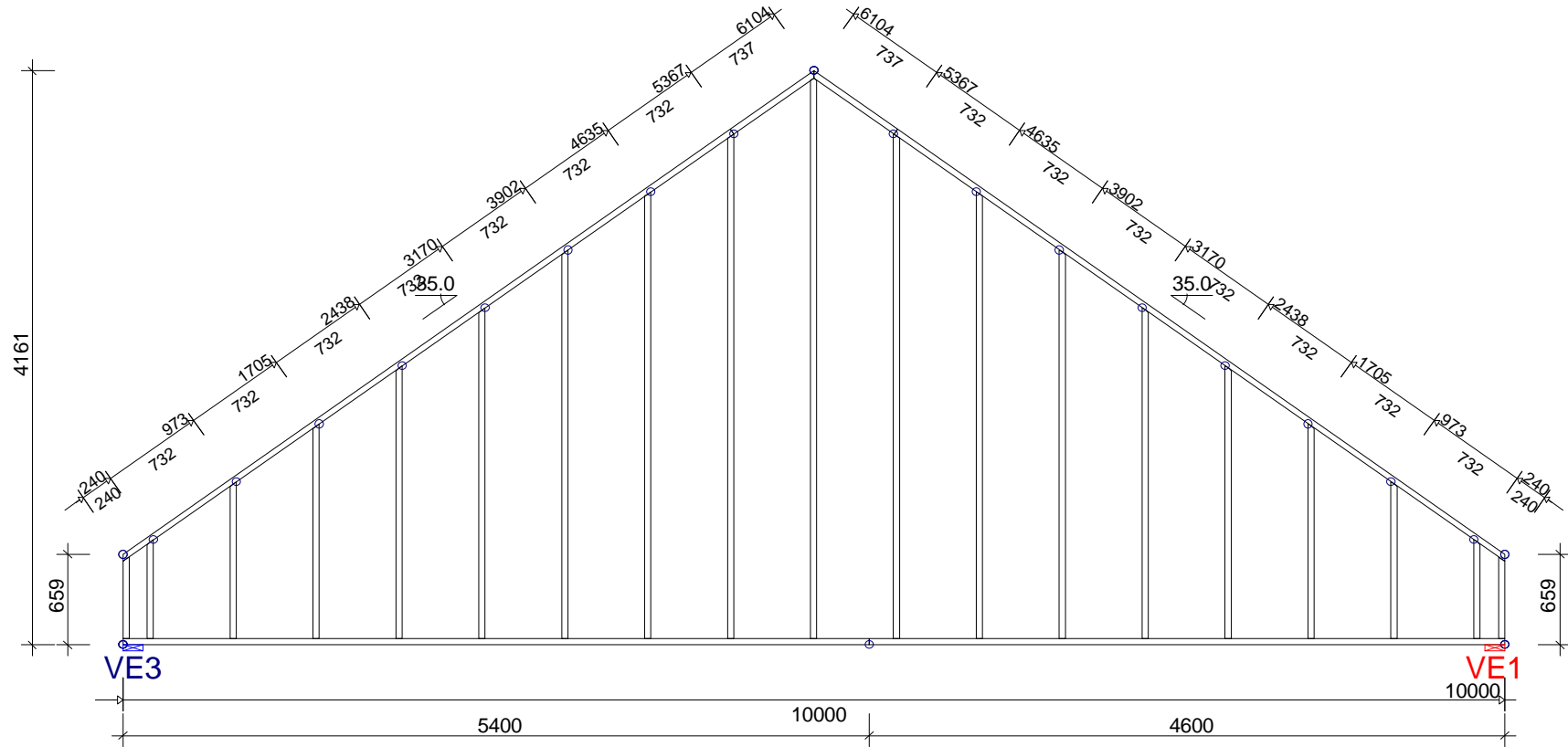
**GENERAL DIRECTIONS:**  
 THE STRUCTURE HAS BEEN CALCULATED USING COMPUTER PROGRAM "TRUSSCON". LIC.NO: 15323  
 CODE TIMBER: BKR03 (BFS2005:18)  
 CODE FASTENER: GODKÄNNANDE-REGLER No 4 1974.

VERSION: 2011 SR1c  
 TIME:

		WoodCon, Ltd. REG.LV41203036961 Ph.+37129332958 e-mail: woodcon@woodcon.lv	
		DRAWN CONSTR.BY CHECKED JOB NO. Complex_1	SCALE 1:50
CODE TYPE NO.	DRAWING NUMBER	REG.	



BRACINGS ACCORDING TO TIMBER TABLE AND STABILITY OF THE TRUSS SYSTEM SHALL BE DESIGNED SEPARATELY



TIMBER: THICKNESS 195 mm				
CONSTR.-PART	DEPTH mm	GRADE	BRACING mm	LOAD N/m <sup>2</sup>
1-2	45	K24		
2-4	45	K24		
4-6	45	K24		300
6-7	45	K24		
7-1	45	K24		300
9-10	45	K24		
11-12	45	K24		
13-14	45	K24		
15-16	45	K24		
17-18	45	K24		
19-20	45	K24		
21-22	45	K24		
23-24	45	K24		
25-26	45	K24		
27-28	45	K24		
29-30	45	K24		
31-32	45	K24		
33-34	45	K24		
35-36	45	K24		
37-38	45	K24		
39-40	45	K24		
41-42	45	K24		

GENERAL SETTINGS:	
TIMBER THICKNESS: (mm)	195
TRUSS CENTRES: (mm)	1200
CLIMATE CLASS:	2
SAFETY CLASS:	2
LOADS (N/m <sup>2</sup> ):	
DEAD LOADS: SEE TIMBER TABLE	
OTHER LOADS AS PER CALC. PRINT-OUT	

**GENERAL DIRECTIONS:**  
 THE STRUCTURE HAS BEEN CALCULATED USING COMPUTER PROGRAM "TRUSSCON". LIC.NO: 15323  
 CODE TIMBER: BKR03 (BFS2005:18)  
 CODE FASTENER: GODKÄNNANDE-REGLER No 4 1974.

VERSION: 2011 SR1c  
 TIME:

		WoodCon, Ltd. REG.LV41203036961 Ph.+37129332958 e-mail: woodcon@woodcon.lv		
		DRAWN CONSTR.BY CHECKED JOB NO. Complex_1	SCALE 1:50	
		CODE TYPE NO.	DRAWING NUMBER	REG.